
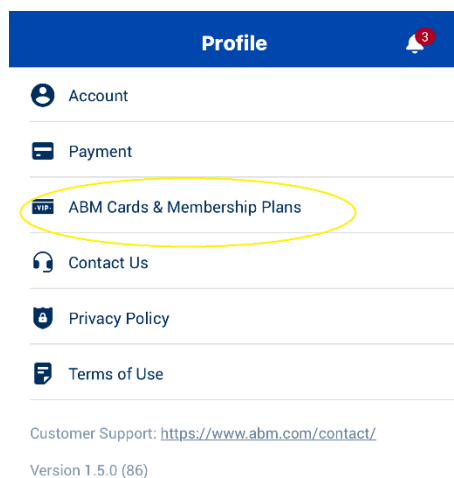


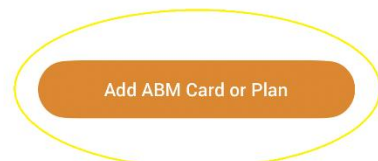
REGISTRATION FOR EV ACCESS

Electric vehicle charging stations are limited to tenants only. Please follow the instructions below to set up your access for the ABM charging stations.

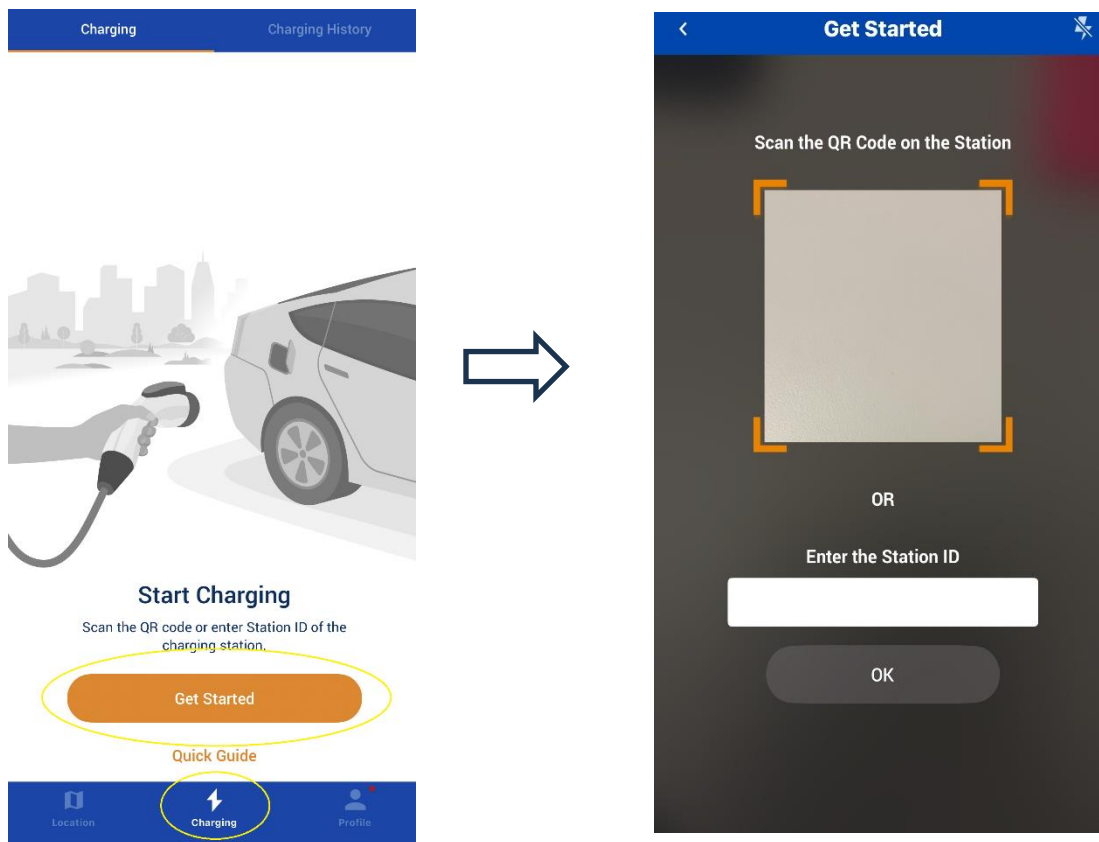
1. Download the ABM EV OS application  on your phone.
2. Set up an account on the app.
3. Once the account is set up, go to “profile tab” at the bottom right corner and select “ABM Cards & Membership Plans”.



4. Select “Add ABM Card or Plan” and scan the QR code provided by the ABM team.



5. Once the membership card is added, go to the “Charging” tab, select “Get Started” and scan QR code on the device through the application.



6. Follow the prompts to add payment information and start charging your vehicle.

For questions and further assistance please reach out to the ABM Parking Services team at nadir.jailani@abm.com or 206.264.8444.

Thank you,

ABM Parking Services

1301 2nd Ave Garage